

7

8

9

10

11

12

1

2

3

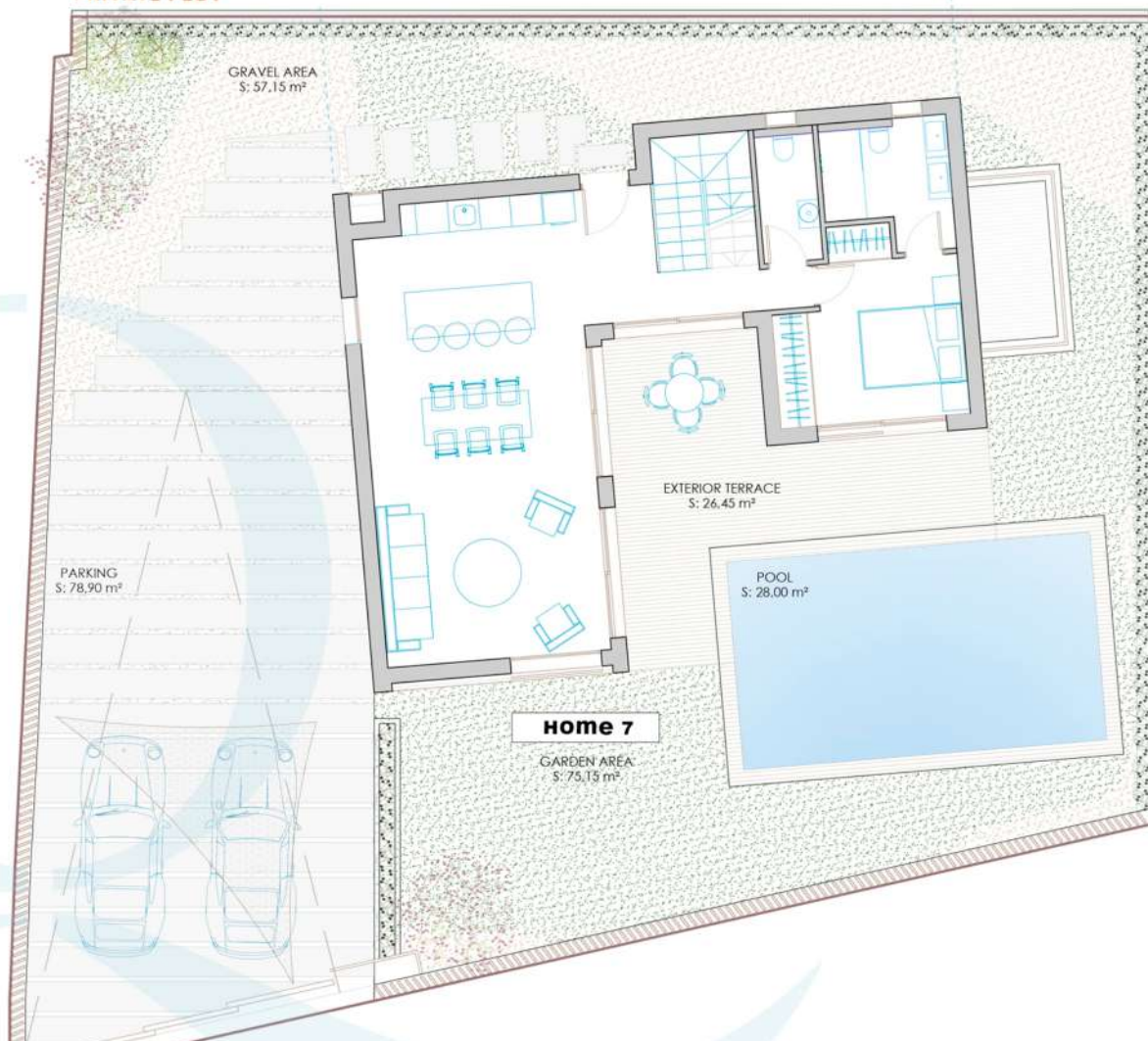
4

5

6

PHASE 2

PRIVATE PLOT



TURQUESA
Homes

Home nº07



Urbanization

07

Home nº07



PRIVATE PLOT

387m²

GARDEN AREA

75,15m²

GRAVEL AREA

57,15m²

PARKING

78,90m²

CONSTRUCTED AREA

285,90m²

ENTRANCE FLOOR

85,50m²

FIRST FLOOR

41,20m²

TERRACE ENTRANCE FLOOR

26,45m²

TERRACE FIRST FLOOR

5,95m²

POOL AREA

28,00m²

BASEMENT

98,80m²

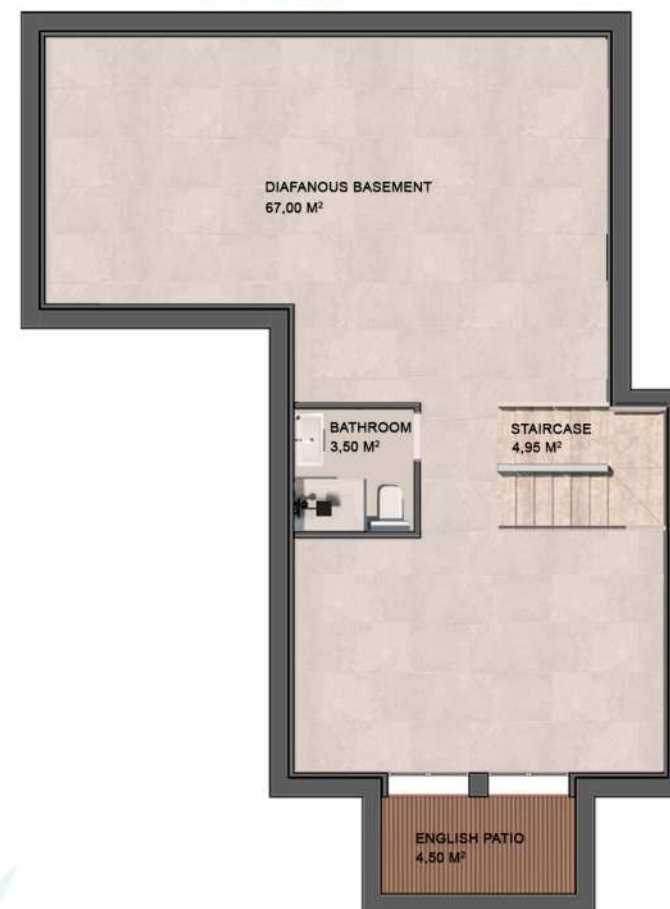
ENTRANCE FLOOR



FIRST FLOOR



BASEMENT

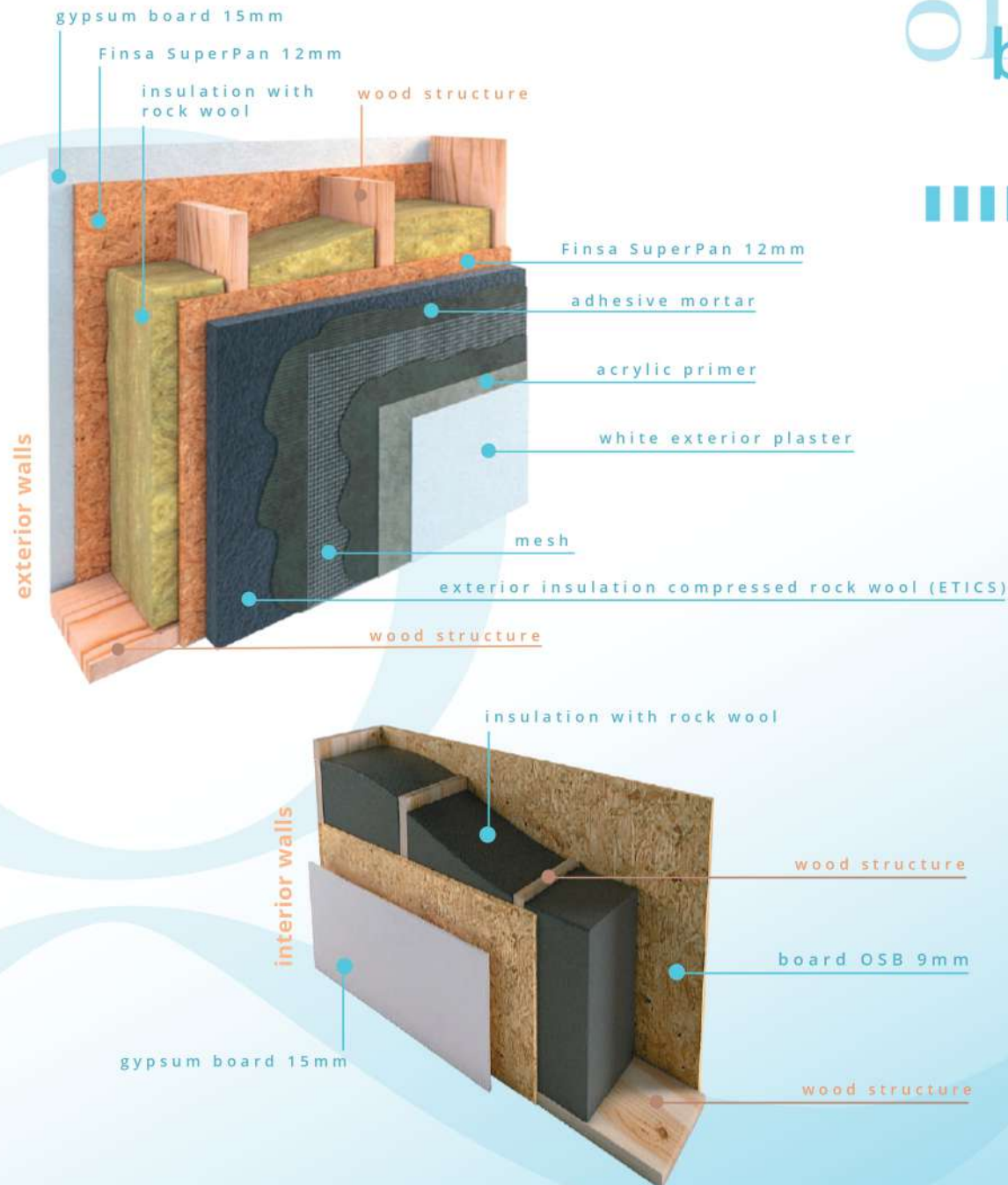


01 building specifications

House structure

Vertical and horizontal structure made of self-supporting industrialized wood panels, including thermal insulation with rockfit rock wool in the interior core of the structure. In addition to the insulation of the panels forming the building shell, the facade of the house is designed with an exterior thermal insulation composite system (ETICS) composed of compressed rock wool sheets providing excellent protection against fire and noise. Finishing layer of white exterior plaster over acrylic primer.

The wood used in the house structure is certified with the PEFC seal, proving its sustainable origin from its harvesting in the forest to the construction site, verifying all the intermediate production processes.





Roofs

Non-trafficable flat roof, with heavy gravel protection, non-adhered waterproofing membrane, including thermal insulation by means of rigid extruded polystyrene foam sheets.

Interior and exterior flooring

Large-format porcelain flooring (90cm x 90cm) to choose from different options, for interior and exterior use, with anti-slip treatment for exterior areas.



Exterior carpentry

Aluminum exterior carpentry, with thermal break, anthracite gray lacquered finish, with QUALICOAT seal, guaranteeing the thickness and quality of the lacquering process. Double glazing with intermediate air chamber and solar treatment. Lacquered aluminum motorized roller shutters in all bedrooms. Pérgola and mallorquinas of lacquered aluminum in wood imitation finish.

Interior carpentry ■■■■■

Access to the house by armored door with security lock finished with lacquered wood panels. The interior doors of the house are lacquered in white. Bedrooms feature built-in wardrobes with sliding doors, including shelves, and hanging bars. Sliding door handles with minimalist profile.



Bathroom tiling ■■■■■

Large format porcelain wall tiles of 120cm x 60cm in all bathrooms and powder room to choose from different options. Shower in Master Bathroom with large format floor-to-ceiling tiling.

Bathroom equipment ■■■■■

Suspended toilets. Furniture with integrated sinks and drawers in all bathrooms and powder room. Black surface-mounted mono mixer taps with EcoSmart technology, which reduces water consumption maintaining maximum comfort. Showers with anti-slip flooring of the same type as the rest of the house, fixed glass screens and black surface-mounted shower columns. Mirrors are not included; an electric connection is provided.

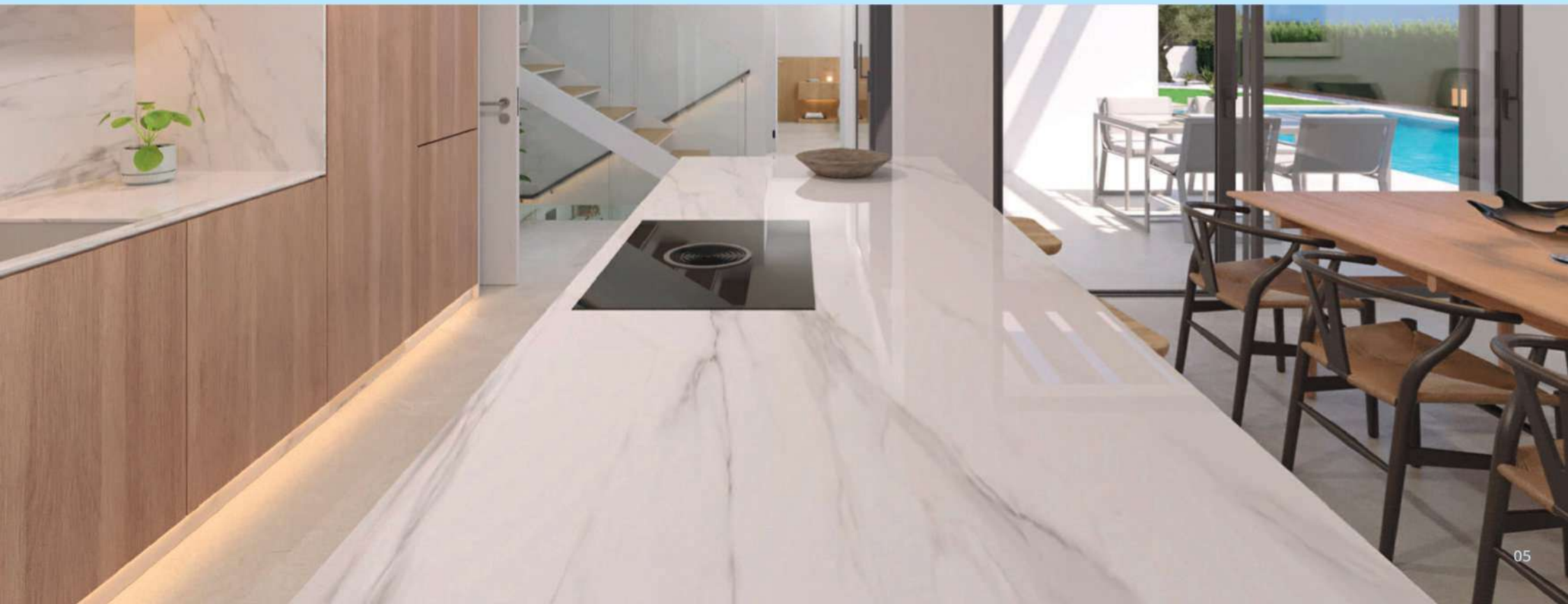


||||| Kitchen

High-quality kitchen furniture with porcelain countertop in marble imitation. Completely equipped (BOSCH or similar) fully integrated into the furniture: induction hob with integrated extractor, oven, microwave, fridge-freezer, washing machine-dryer.

||||| Interior paint

Smooth plastic paint on non-tiled vertical surfaces and ceilings.



■■■■■ Electricity and telecommunication

Electrical installation according to Low Voltage Regulations. Electrical mechanisms of first quality (JUNG or similar). TV and internet sockets in all bedrooms and living room. Installation of charging point for electric cars in private parking area. Solar panel system 3.6 kW on upper floor roof. LED spotlights throughout the house and exterior lights on outside walls included. Special lamps in the dining area and living room area are not included.

■■■■■ Plumbing and air conditioning

Interior plumbing with insulated pipes to avoid condensation or heat loss. Complete air conditioning system (hot-cold) by air ducts for temperature control in each individual room. Air conditioning and water heating based on an Aerothermal system with heat pump. Ventilation system with heat recovery for efficient air exchange from the inside of the house and the outside providing excellent air quality and economic savings on electricity bills.





Pool and private plot

Private pool tiled with mosaic tiles including complete filtration equipment. The private plot is finished with gravel, artificial grass, and tiles according to the design of each plot. Plots are separated from each other by a simple fence with occultation net.



Parking area

The private parking area is finished with paving stones.



Access and community areas

Access through sliding, folding and telescopic doors, depending on the case, motorized. Integrated LED lighting in the community streets of the development.