

Toulouse 3D. Ground floor
106

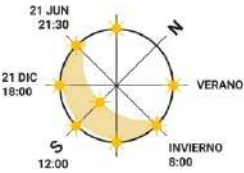
General surfaces

Built area	114,50
Terraces	48,20
Plot 106	554,00

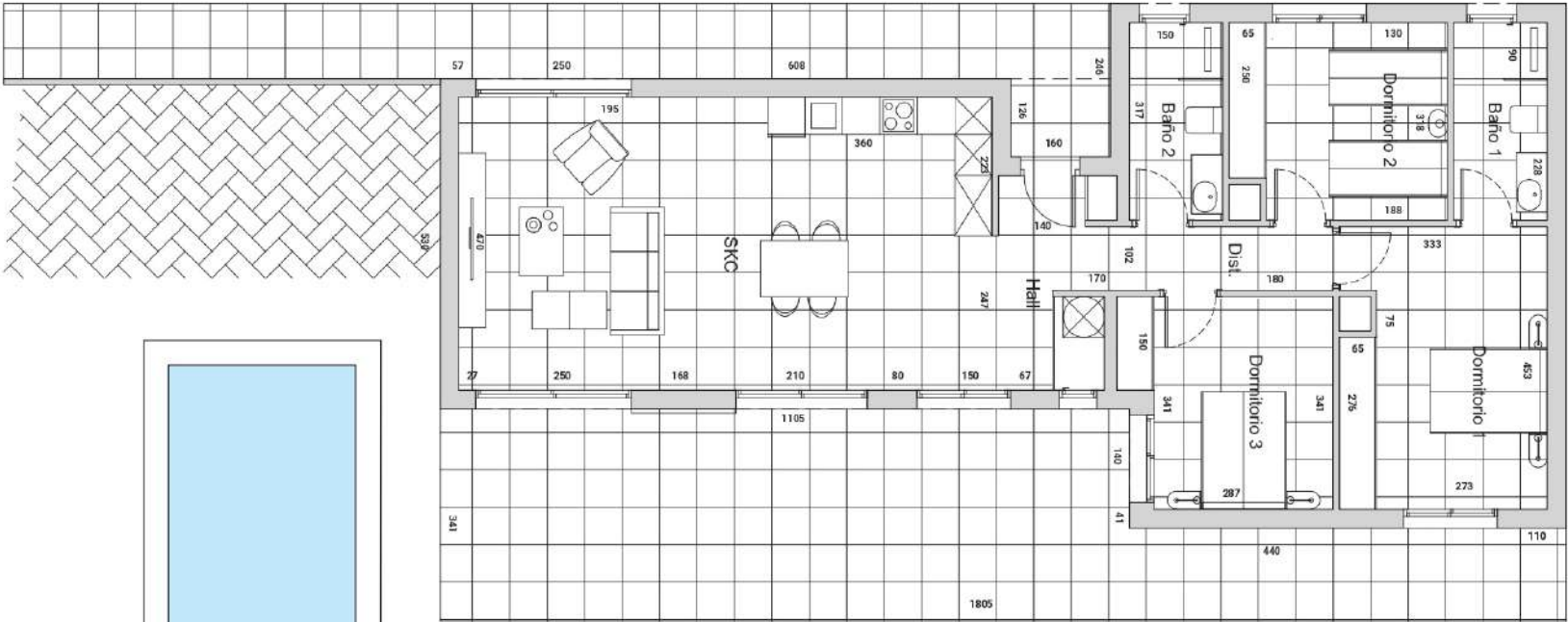
Usefull surfaces

LDK	40,40
Bedroom 1	14,80
Bedroom 2	10,80
Bedroom 3	10,60
Bathroom 1	4,80
Bathroom 2	4,80
Hall	4,00
Dist 1	4,20
Pool	18,00

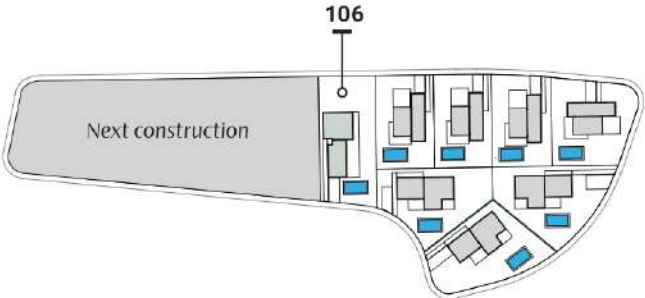
All measures are expressed in M2.



BUILDING
YOUR TIME



Easy Living Costa Blanca



Legal Notice: Standard floor plan, which does not include the common use areas. Each residence has its own floor plan, which may vary slightly from the standard one. The furniture and household items that appear in the plan are merely for decorative purposes. This is not a contractual document. This plan can be modified by the Project Management Team according to construction or design needs.