

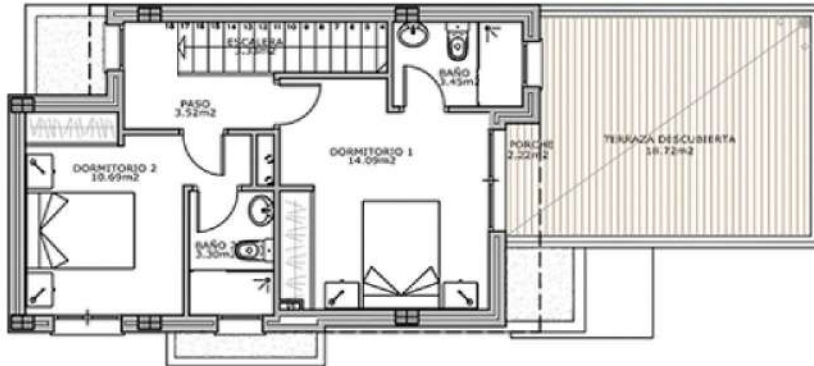
PLANTA BAJA



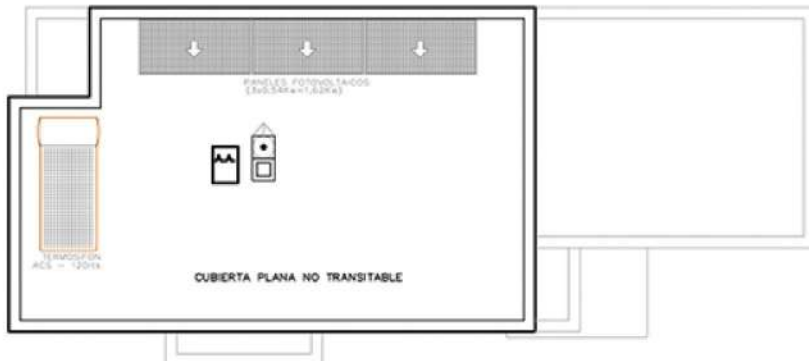
SUPERFICIES

SUP. CONSTRUIDA PB Y P1	123,85 m ²
TERRAZAS	26,01 m ²
TOTAL	149,86 m ²

PLANTA PRIMERA



PLANTA CUBIERTAS



**SOLARIUM OPCIONAL
OPTIONAL SOLARIUM**



VILLA POLOP

**3 DORMITORIOS + 3 BAÑOS
3 BEDROOMS + 3 BATHROOMS**